

# A Boundary-Centric Approach to Studying Mobile Information Sharing



**Adam Worrall**  
Doctoral Candidate  
Florida State University



ASIS&T SIG USE Symposium, Nov. 2, 2013





- Mobile technology becoming increasingly ubiquitous
- New contexts and environments

# Boundary-Centric

- Boundaries between these contexts
- Individuals, groups span boundaries
- Role of boundary objects in bridging between, across
- Grounded, thorough, insightful

# Boundary-Centric

- Boundaries between these contexts
- Individuals, groups span boundaries
- Role of boundary objects in bridging between, across
- Grounded, thorough, insightful





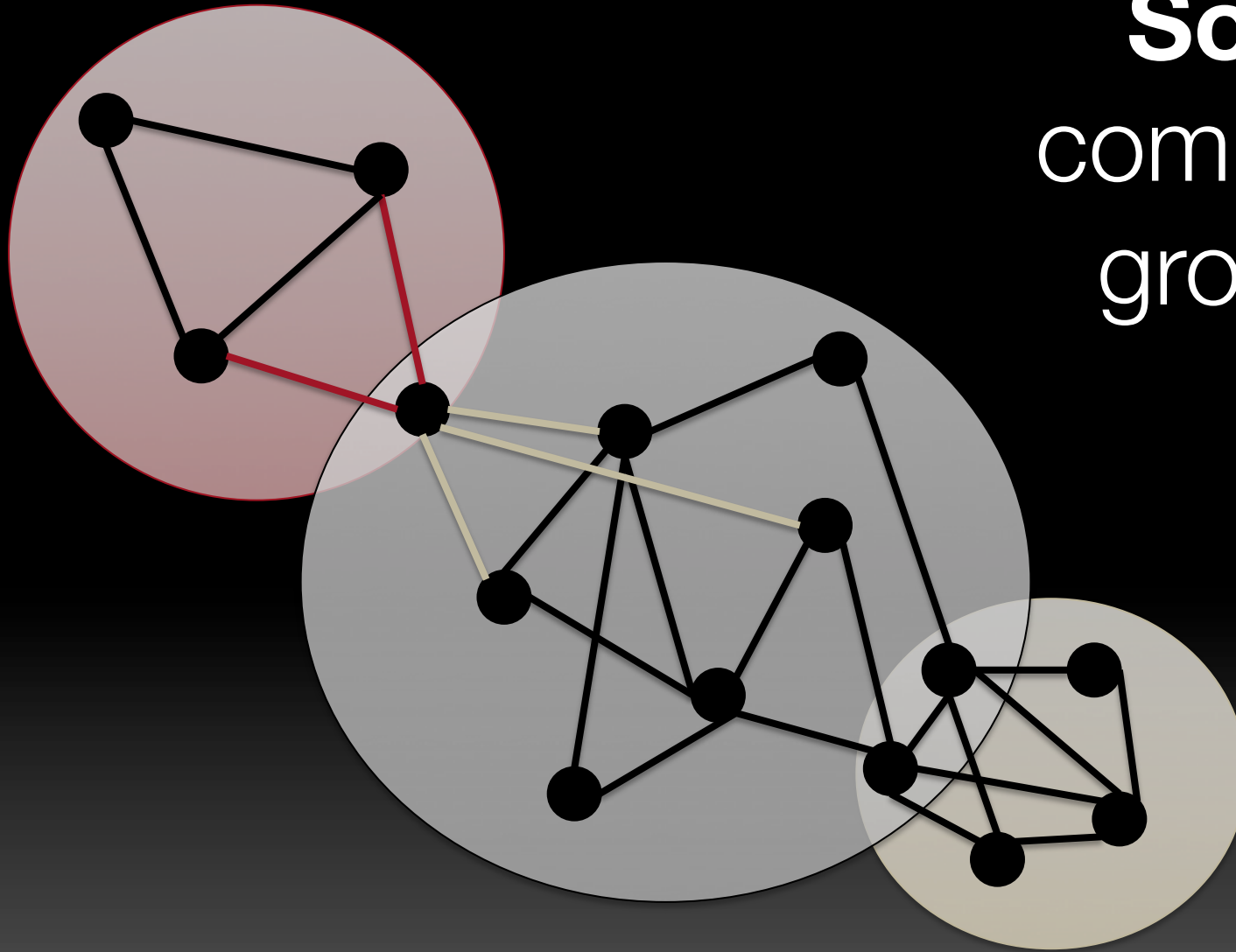
**Physically**  
home, work, school





**Physically**  
information grounds  
mobile technology

# **Socially** communities groupings ties





# Physically *and* socially





# Theoretical Lenses

- Social Worlds Perspective
- Theory of Information Worlds
- Boundary Object Theory
- Gatekeepers and Boundary Spanners

# Theoretical Lenses

- **Social Worlds Perspective**  
(Strauss)
  - Sites
  - Technologies
  - Organizations



# Theoretical Lenses

- **Theory of Information Worlds**  
(Burnett & Jaeger)
  - Social Norms
    - Normative Behavior (Chatman)
  - Social Types
    - Roles (explicit & implicit)
  - Information Value

# Theoretical Lenses

- **Theory of Information Worlds**  
(Burnett & Jaeger)
  - Social Norms
    - Normative Behavior (Chatman)
  - Social Types
    - Roles (explicit & implicit)
  - Information Value



# Theoretical Lenses

- **Boundary Object Theory** (Star)
  - *Translation* of meaning, understanding
  - *Coherence* between translations and communities
  - *Convergence* of new communities around objects

# Theoretical Lenses

- **Boundary Object Theory** (Star)
  - *Translation* of meaning, understanding
  - *Coherence* between translations and communities
  - *Convergence* of new communities around objects



# Theoretical Lenses

- **Gatekeepers and Boundary Spanners** (Knowledge Management)
  - How individuals facilitate information and knowledge sharing across community boundaries

Sites

Technologies

Organizations

Social Norms

Social Types

Information Value

Translation

Coherence

Convergence

Gatekeeper

Boundary Spanner



Sites

**Technologies**

Organizations

Social Norms

**Social Types**

Information Value

Translation

Coherence

Convergence

Gatekeeper

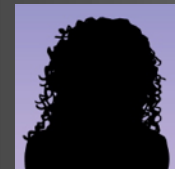
Boundary Spanner



Tutor



Tutor



Student



Student

Sites

Technologies

Organizations

Social Norms

Social Types

Information Value

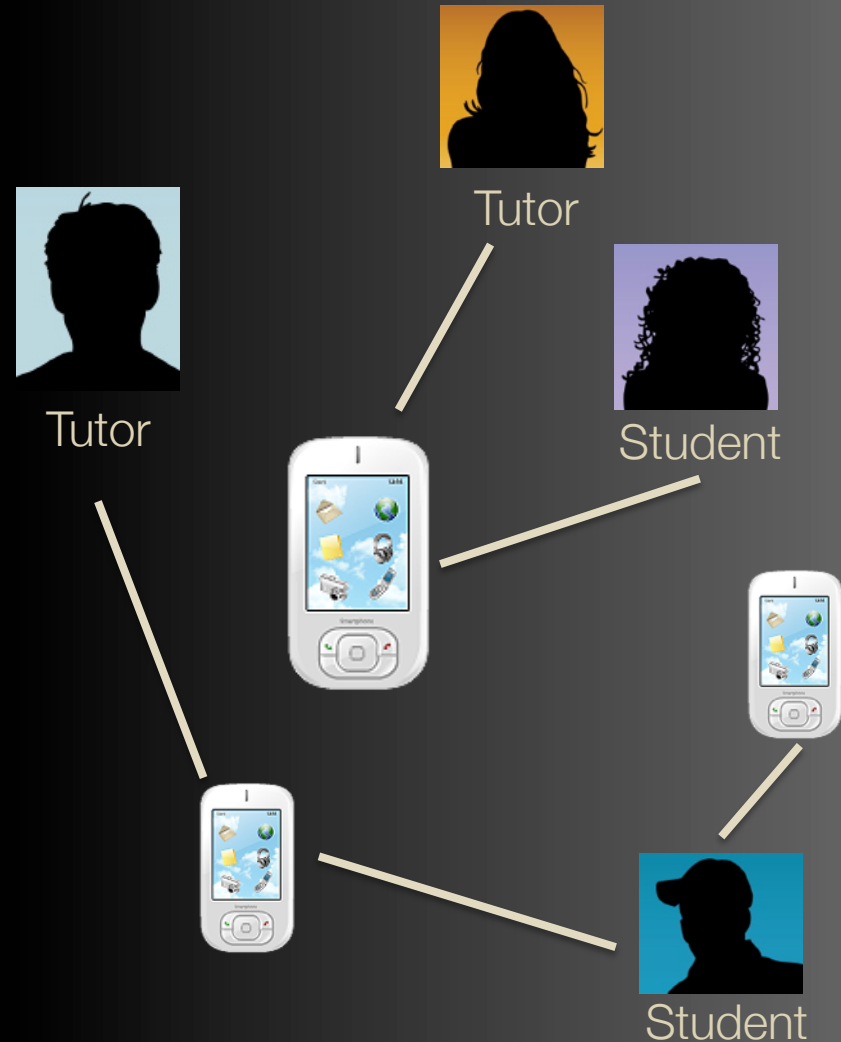
**Translation**

Coherence

Convergence

Gatekeeper

**Boundary Spanner**



Sites

Technologies

Organizations

**Social  
Worlds**

Social Norms

Social Types

Information Value

**Information  
Worlds**

Translation

Coherence

Convergence

**Boundary  
Objects**

Gatekeeper

Boundary Spanner

**Knowledge  
Management**

**Boundary-centric view  
of information sharing**



## Conclusion

- A boundary-centric view of information sharing “on the move” can lead to insight both in individual studies and for the body of information behavior research.